



2ND FLR./ BONUS PL.
DORMER

8'-11 1/8"

2ND FLOOR LEVEL

1ST FLOOR PL.

8'-11 1/8"

1ST FLOOR LEVEL

BASEMENT PL.

TO 2ND
FLR LEVEL

2ND FLR./ BONUS PL.
DORMER

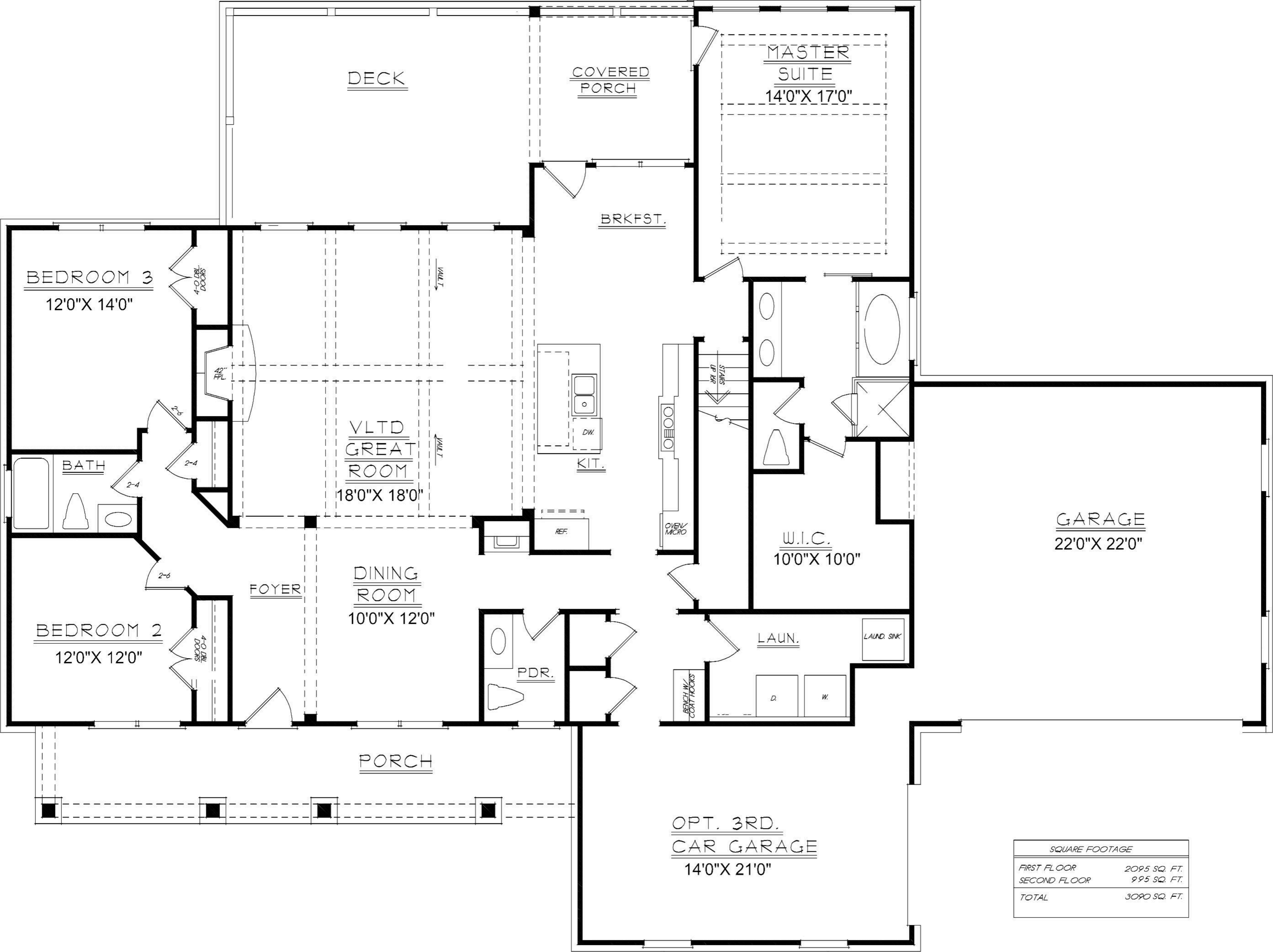
8'-11 1/8"

2ND FLOOR LEVEL

1ST FLOOR PL.

8'-11 1/8"

1ST FLOOR LEVEL



SQUARE FOOTAGE	
FIRST FLOOR	2095 SQ. FT.
SECOND FLOOR	995 SQ. FT.
TOTAL	3090 SQ. FT.

