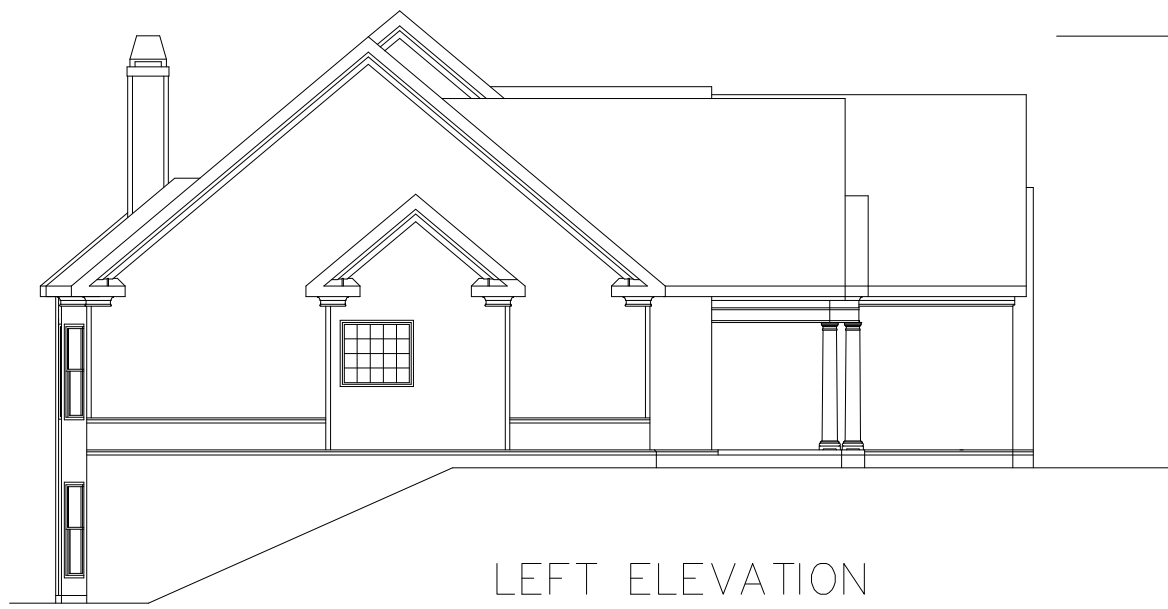




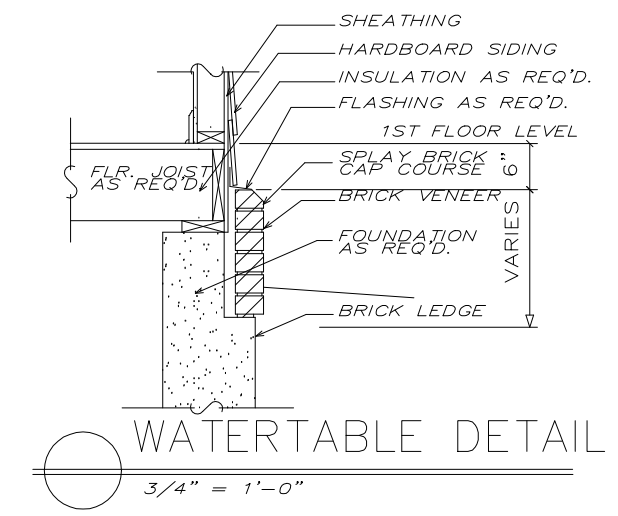
REAR ELEVATION
1/8" = 1'-0"



LEFT ELEVATION
1/8" = 1'-0"

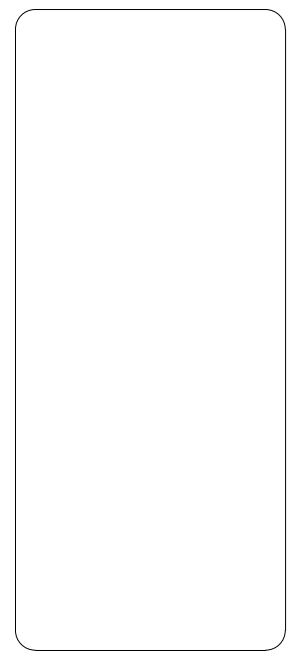


RIGHT ELEVATION
1/8" = 1'-0"



FRONT ELEVATION
1/4" = 1'-0"

REVISIONS	DATE	BY



ELEVATIONS

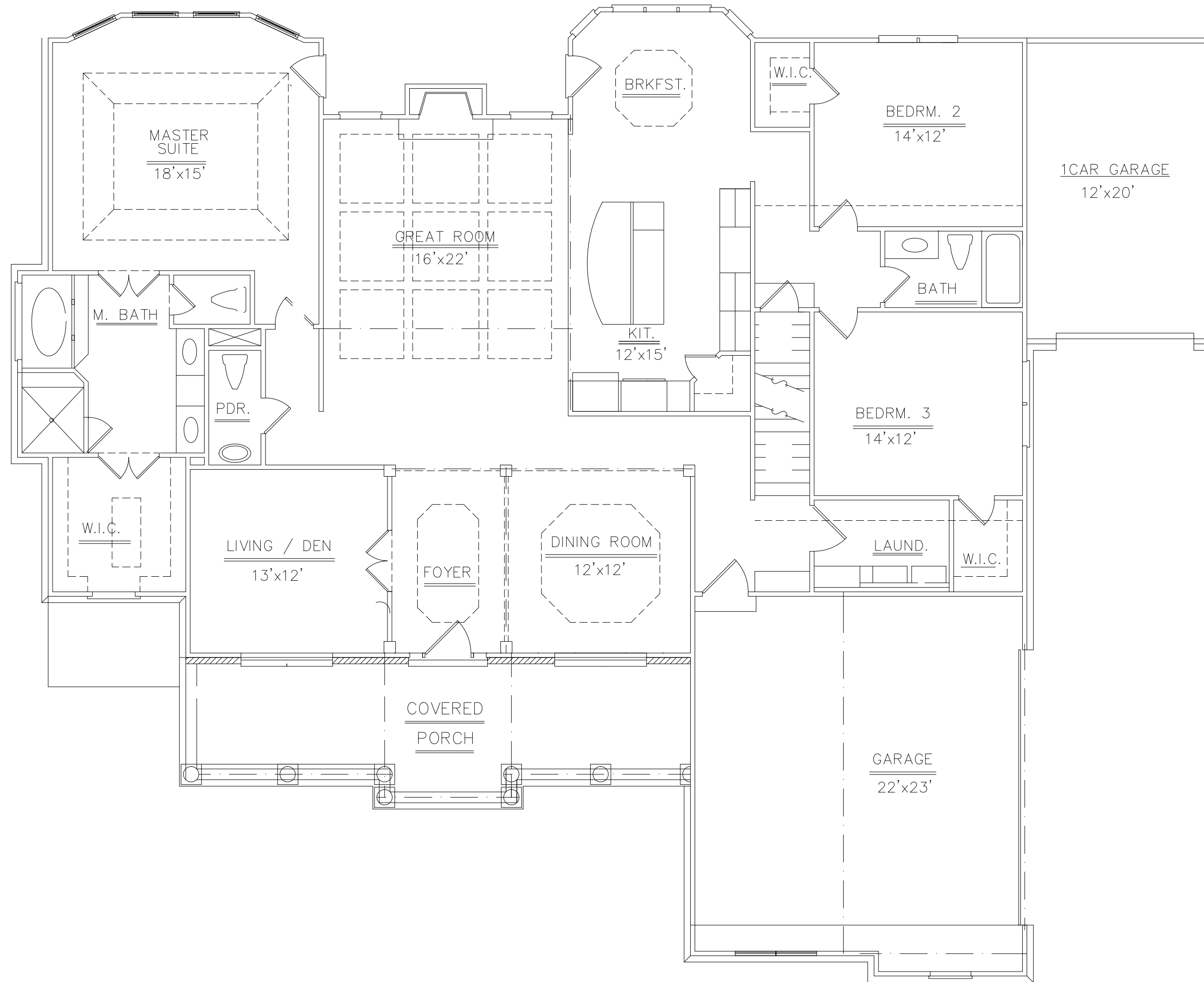
THE BOSWORTH

BY: CK:

DATE:

SHEET:

OF:



SQUARE FOOTAGE	
FIRST FLOOR	2500SQ. FT.
SECOND FLOOR	325SQ. FT.
TOTAL	2825SQ. FT.

FIRST FLOOR PLAN
1/4" = 1'-0"

REVISIONS	DATE	BY

FIRST FLOOR PLANS

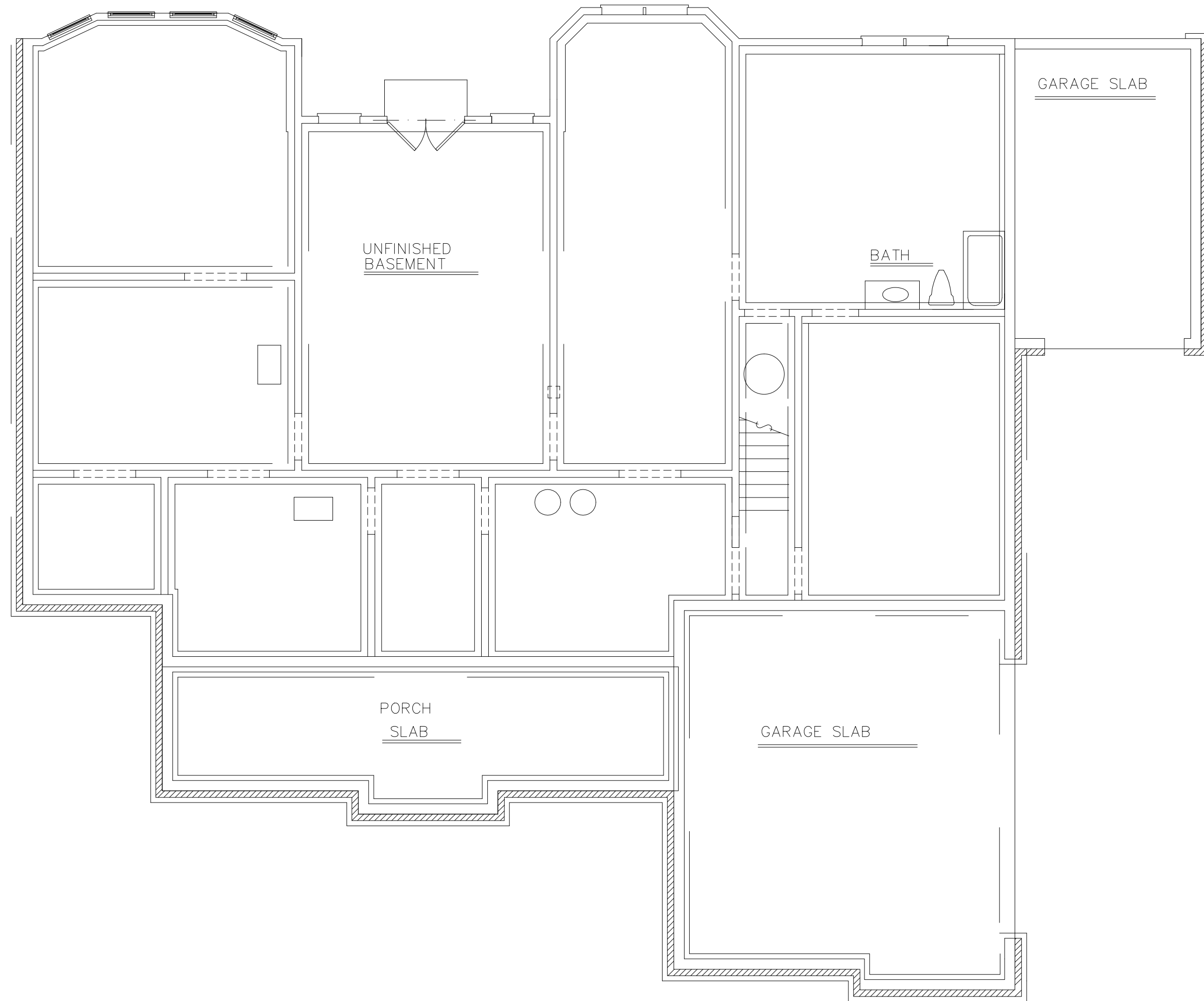
THE BOSWORTH

BY: CK:

DATE:

SHEET:

OF:



BASEMENT FOUNDATION PLAN
 1/4" = 1'-0"

SQUARE FOOTAGE	
FIRST FLOOR	2500SQ. FT.
SECOND FLOOR	325SQ. FT.
TOTAL	2825SQ. FT.

REVISIONS	DATE	BY

BASEMENT FOUND.

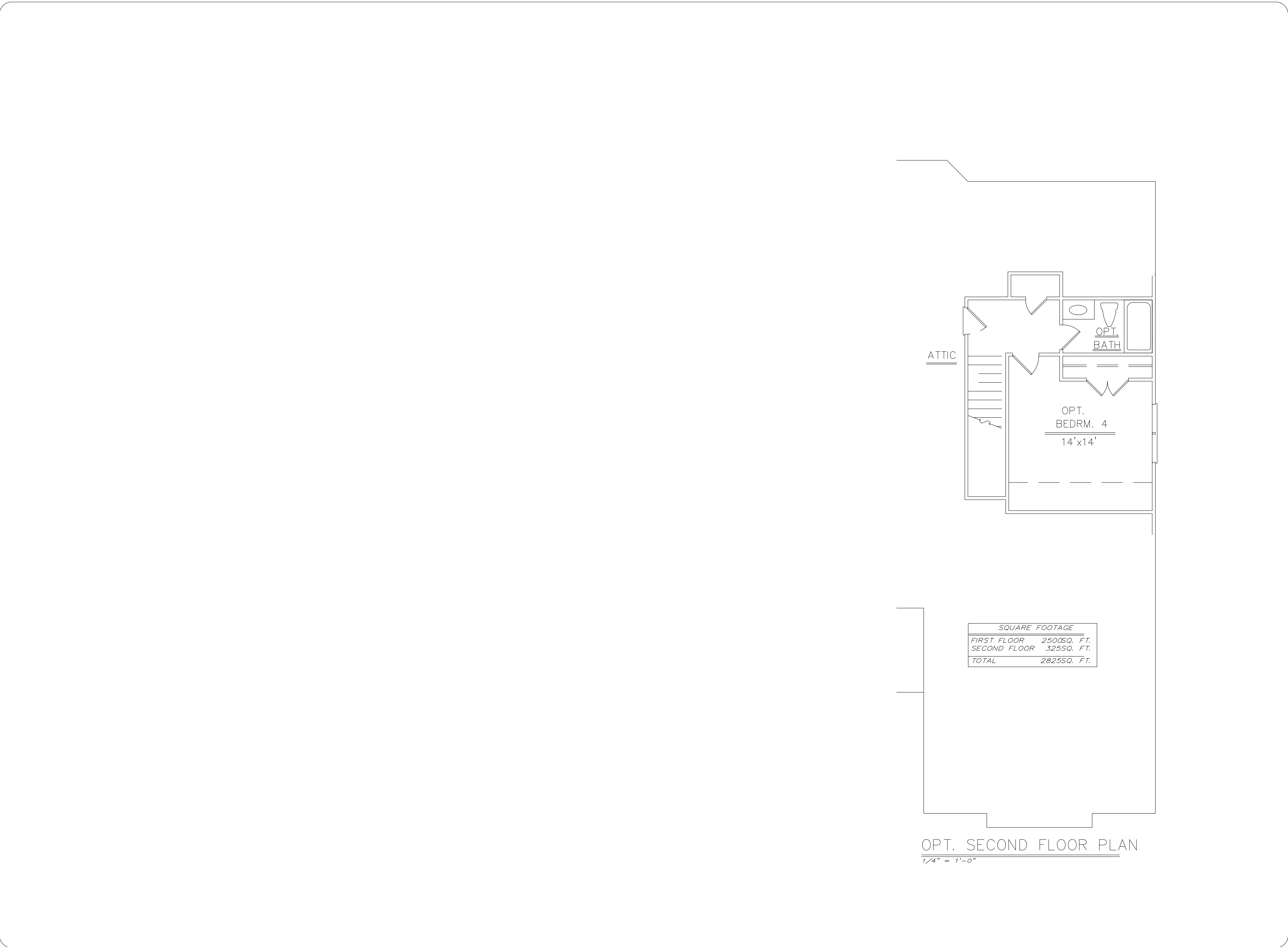
THE BOSWORTH

BY: CK:

DATE:

SHEET:

OF:



ATTIC

OPT.
BATH

OPT.
BEDRM. 4
14'x14'

SQUARE FOOTAGE	
FIRST FLOOR	2500SQ. FT.
SECOND FLOOR	325SQ. FT.
TOTAL	2825SQ. FT.

OPT. SECOND FLOOR PLAN
1/4" = 1'-0"

REVISIONS	DATE	BY

SECOND FLOOR PLAN

THE BOSWORTH

BY: CK:

DATE:

SHEET:

OF: