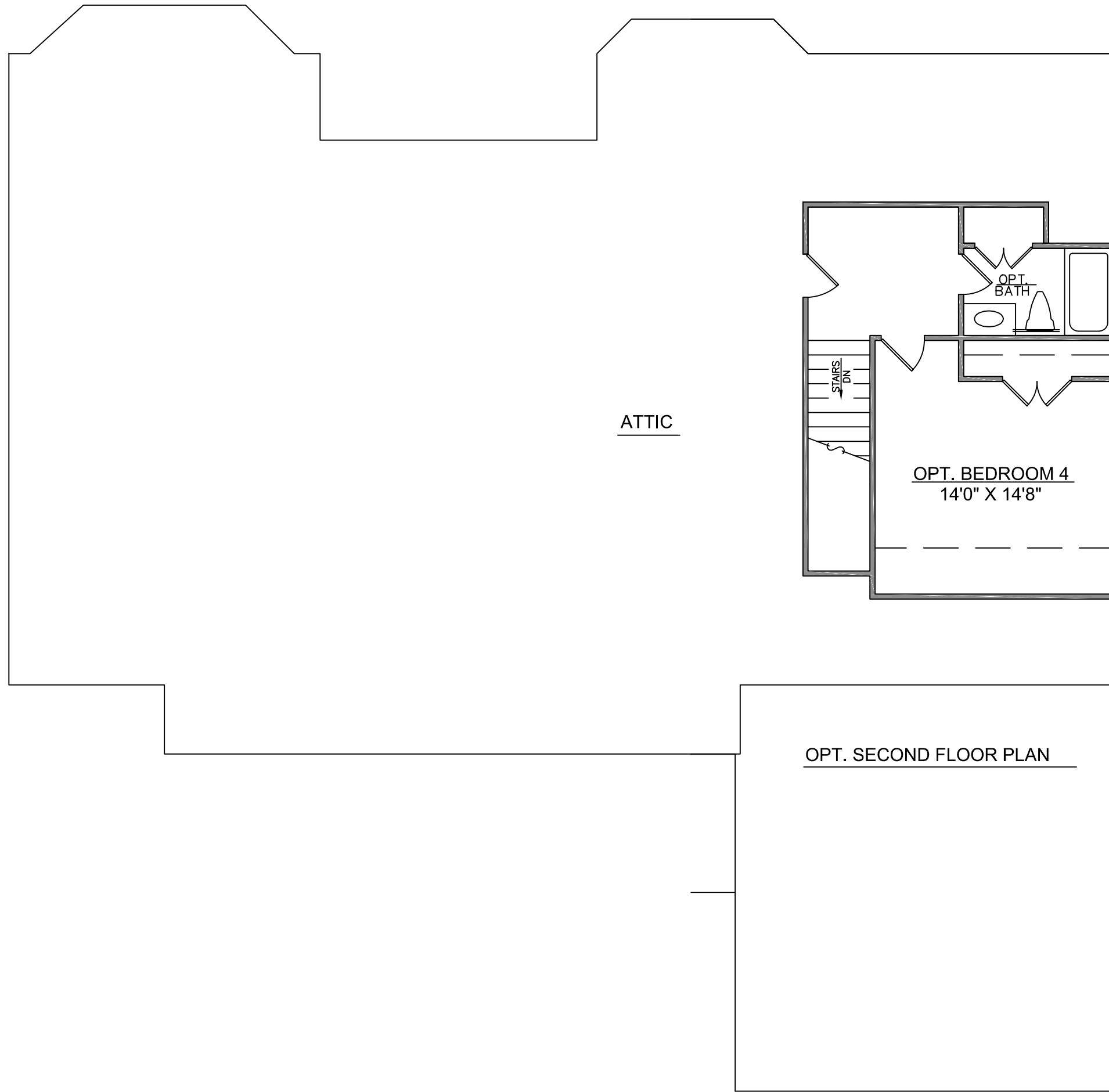


| SQUARE FOOTAGE | |
|----------------|--------------|
| FIRST FLOOR | 2500 SQ. FT. |
| SECOND FLOOR | 325 SQ. FT. |
| TOTAL | 2825 SQ. FT. |



ATTIC

STAIRS
DN

OPT.
BATH

OPT. BEDROOM 4
14'0" X 14'8"

OPT. SECOND FLOOR PLAN